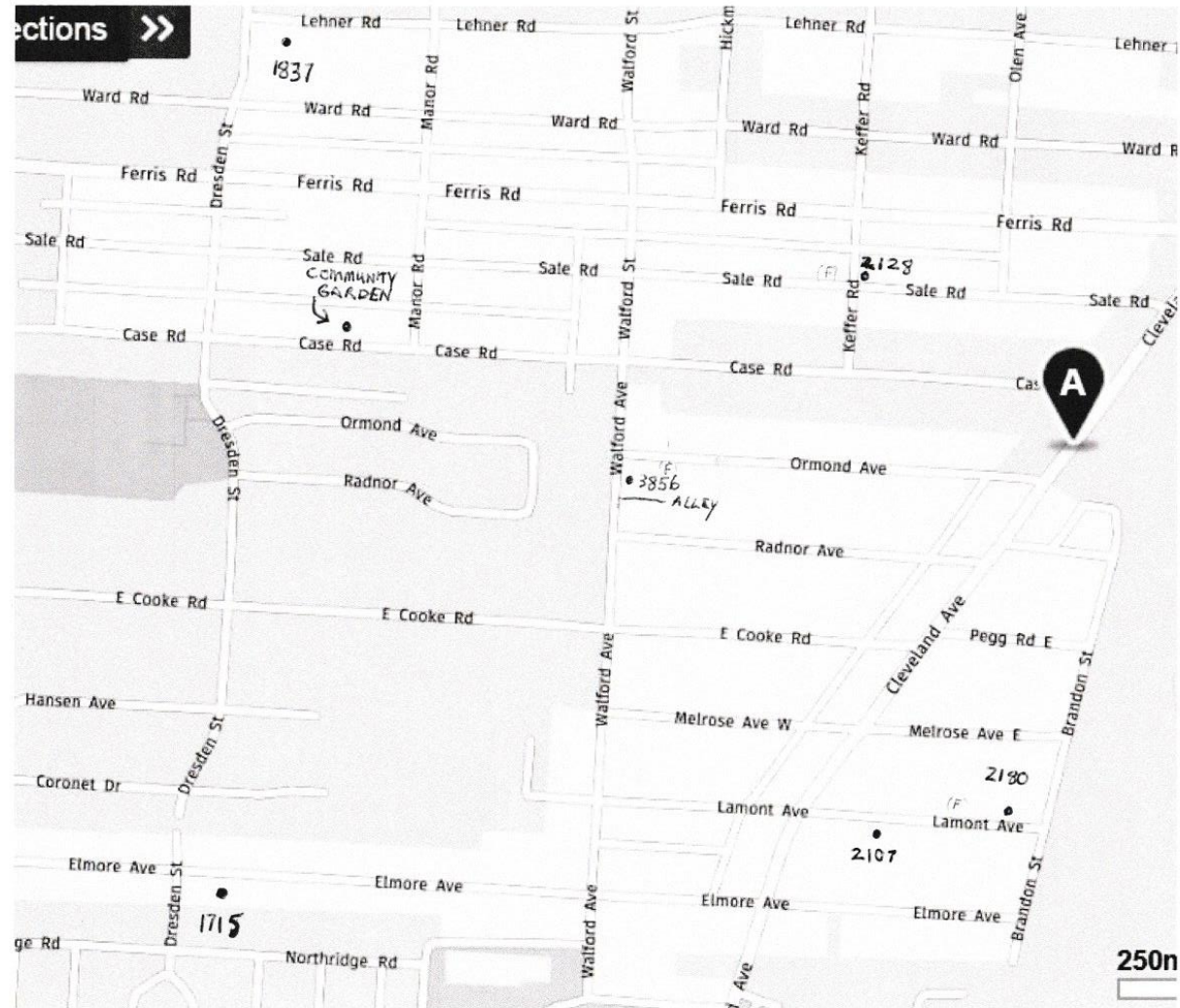


Let's Think Playgrounds & Parks



The Township owns several vacant lots that could potentially become neighborhood assets...

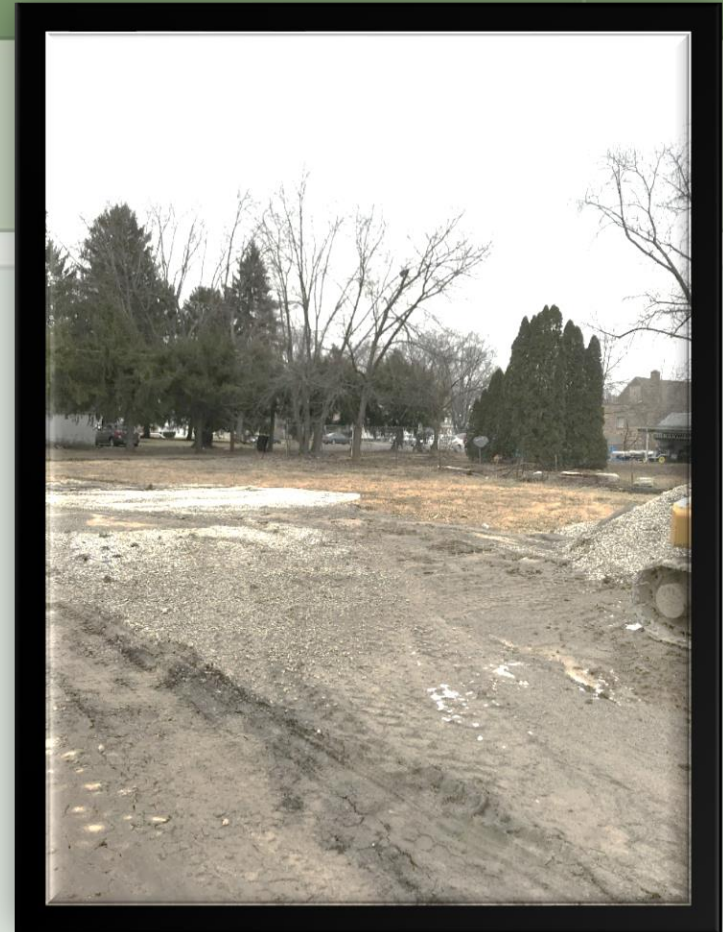


1588
ELMORE
←
5 EAST OF
CHURCH

2029 EDDYSTONE
4 LOTS E OF
WESTERVILLE RD.

2128 Sale Rd

- Corner lot
- Two nice sized Spruce trees on Sale Rd. side forming a natural entry



- Several trees line the side and back
- Construction providing a start on parking on Keffer side

3856 Walford Rd

- Traffic may preclude typical playground but traffic an advantage for a possible Veterans' Memorial?
- A monument, a sign, a flag pole, benches, plantings, could be simple
- Has a small hard driveway already
- Nice medium sized deciduous tree in front & tree line along back



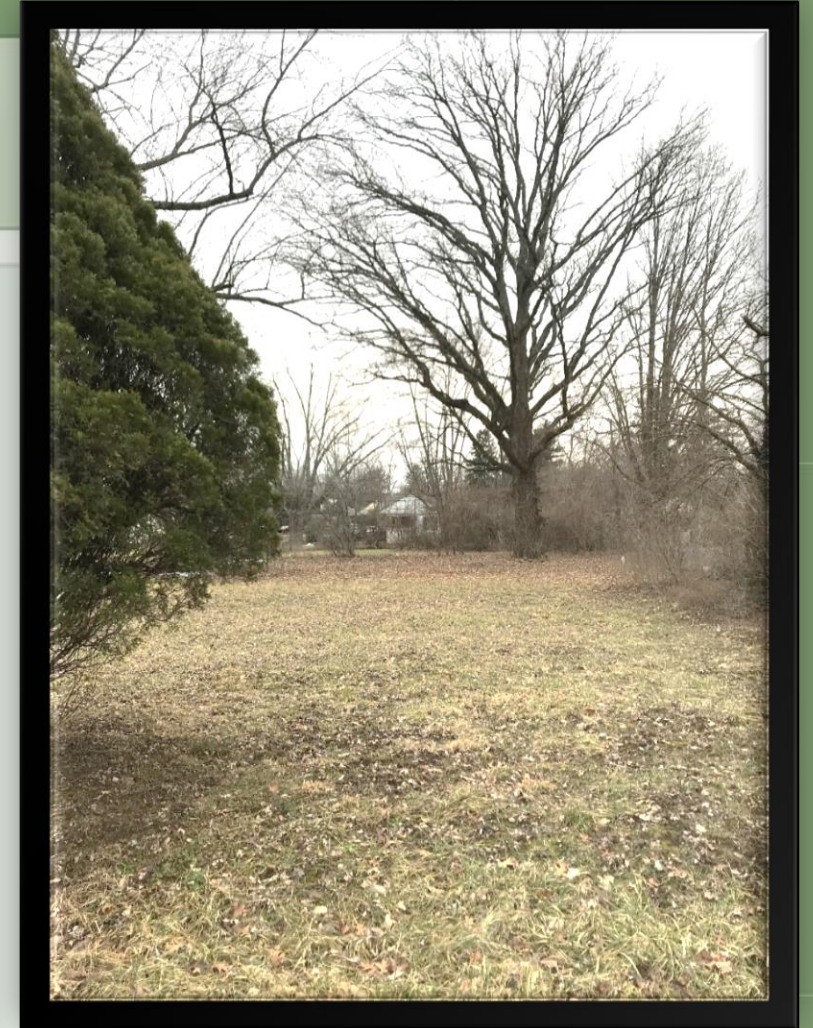
1715 Elmore Rd

- Neighborhood with children
- Will need miscellaneous tree work
- Approx 4 large trees in place
- Location has good access and parking potential
- Enthusiastic neighbors

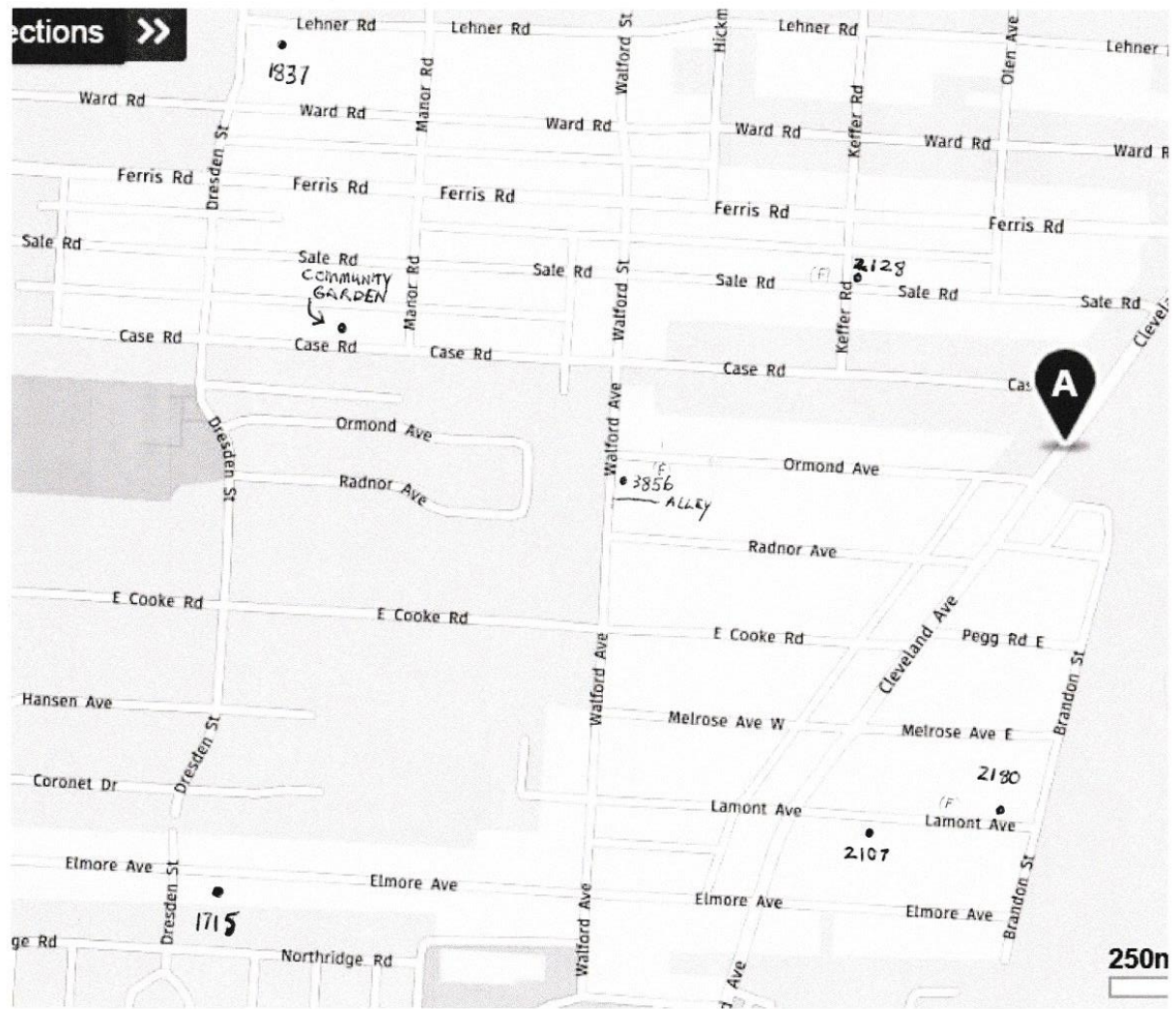


1837 Lehner

- Two cedar(?) trees forming a natural entry
- Good sized lot, open with some large trees scattered around
- Extreme NW corner location
- (One resident has spoken against this location at a previous meeting)



Beautiful large oak tree



1588
ELMORE
←
5 EAST OF
CHURCH

2029 EDDYSTONE
4 LOTS E OF
WESTERVILLE RD.